

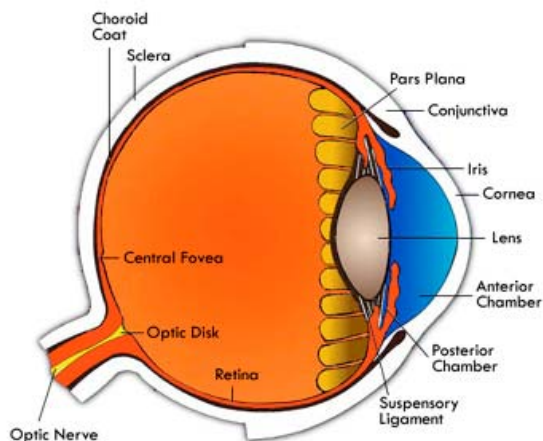
OPHTHALMOLOGY

CORNEAL TOPOGRAPHY

A Patient's Guide

This non-contact test provides a detailed map of the curve and shape of your cornea. It is used to diagnose and aid in the treatment of corneal diseases and condition.

This testing requires you to look into a machine. A computer then maps your cornea.



There is no medication or eye drops given for this procedure. No special preparation or post-procedure precautions or care are required. As with any procedure or test, it is important to report any known allergies, chronic conditions and/or medications that you are taking as these may influence your testing and diagnosis.



Estimated time spent at the hospital for the procedure: **45 minutes** (time includes filling out forms).