

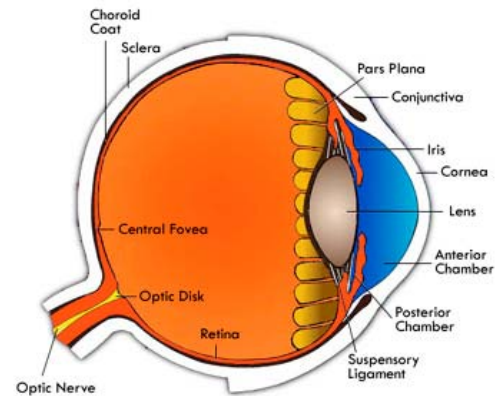
## OPHTHALMOLOGY

# PACHYMETRY

## A Patient's Guide

**T**his is a test that uses ultrasound to gently measure the thickness of the cornea (the dome-shaped covering on the front of the eye). This is an essential measurement in testing for glaucoma and also prior to certain surgical procedures.

**D**rops to numb or “freeze” the eye are first instilled into the eye(s) to be tested. Once the eye is numb, a small probe is placed directly onto the front of the eye; a computer then measures the corneal thickness.



**N**o special preparation or post-procedure precautions or care are required. As with any procedure or test, it is important to report any known allergies, chronic conditions and/or medications that you are taking. Rare allergic reactions may occur with the use of the freezing drops. Stinging, tearing, swelling and sensitivity occur rarely.



Estimated time spent at the hospital for the procedure: **30 minutes** (time includes filling out forms).