

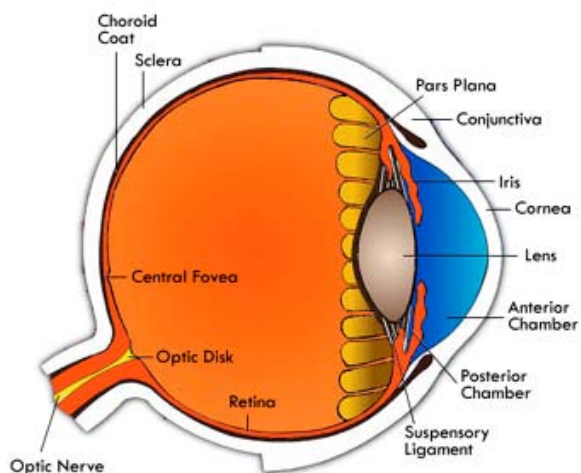
OPHTHALMOLOGY

VISUAL FIELD TESTING

A Patient's Guide

The area which is seen by the eye is the visual field. Mapping this visual field is important for detecting many disorders, particularly of the nerves in the eye, the optic nerve, retinal tissue and brain; the most common being glaucoma.

Only the most severe losses of peripheral vision can be detected by gross testing such as hand waving. More common and subtle vision deficits can only be detected by a computerized visual field analyzer, which determines retinal sensitivity in any given location.



This testing requires you to look into a machine. Goldman Perimetry involves the tester moving a target (light) from side-to-side from an area not visible to an area where it is visible. You will be asked to press a button to indicate when you first see the target. Humphrey's Perimetry involves a target (light), which increases in brightness until it is seen. The target changes location throughout the test. Again, you will be asked to press a button to indicate when you first see the target.

There is no medication or eye drops given for this procedure. No special preparation or post-procedure precautions or care required. As with any procedure or test, it is important to report any known allergies, chronic conditions and/or medications that you are taking as these may influence your testing and diagnosis.

Estimated time spent at the hospital for the procedure: **45 minutes** (time includes filling out forms).